



# MONTHLY MEMBERSHIP PROGRESS REPORT

District 325A2

Results as of: 7/31/2015

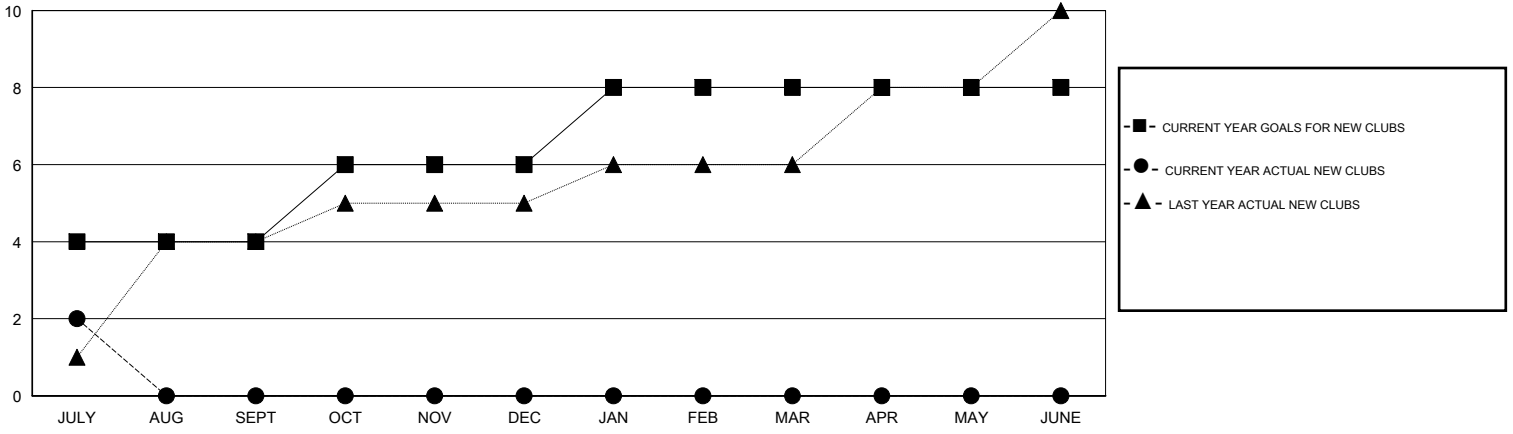
GMT: NAZMUL HAQUE

LOCATION NEPAL

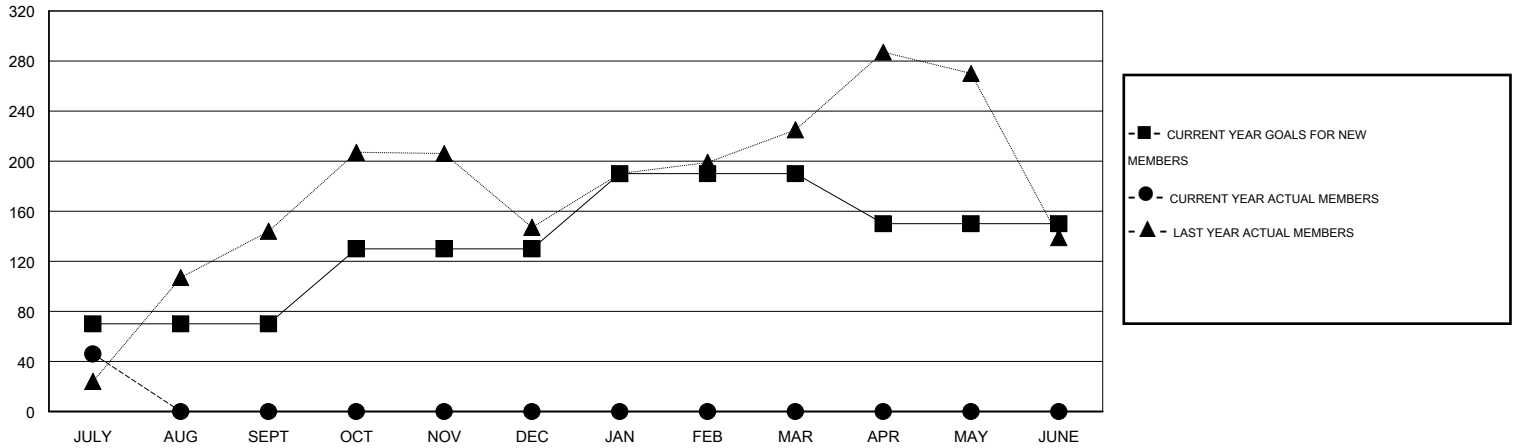
GMT CA 6

| Clubs                 |               |           |               |               | Members               |                 |                               |                 |               |
|-----------------------|---------------|-----------|---------------|---------------|-----------------------|-----------------|-------------------------------|-----------------|---------------|
| RESULTS FOR 2015-2016 |               |           |               |               | RESULTS FOR 2015-2016 |                 |                               |                 |               |
| QUARTER               | NEW CLUB GOAL | NEW CLUBS | DROPPED CLUBS | NET GAIN/LOSS | QUARTER               | NEW MEMBER GOAL | CHARTER AND NEW MEMBERS ADDED | DROPPED MEMBERS | NET GAIN/LOSS |
| JULY/AUG/SEPT         | 4             | 2         | 0             | 2             | JULY/AUG/SEPT         | 70              | 118                           | 72              | 46            |
| OCT/NOV/DEC           | 2             | 0         | 0             | 0             | OCT/NOV/DEC           | 60              | 0                             | 0               | 0             |
| JAN/FEB/MAR           | 2             | 0         | 0             | 0             | JAN/FEB/MAR           | 60              | 0                             | 0               | 0             |
| APR/MAY/JUNE          | 0             | 0         | 0             | 0             | APR/MAY/JUNE          | -40             | 0                             | 0               | 0             |

GOALS AND ACTUAL NEW CLUBS CUMULATIVE



GOALS AND ACTUAL MEMBERS CUMULATIVE



|                        |   |                                  |                |
|------------------------|---|----------------------------------|----------------|
| DROPPED CLUBS: 0       | 21 CLUBS OF 104 ADDED 1 OR MORE NEW MEMBERS | <u>GENDER DISTRIBUTION</u>       |                |
| <u>DROPPED MEMBERS</u> |   | MALE                             | 1,846 (75.72%) |
| DECEASED               | 0   | FEMALE                           | 592 (24.28%)   |
| CLUB CANCELLED         | 0   | <u>FAMILY UNIT MEMBERS</u> 1,364 |                |
| OTHER                  | 72  | <u>HEAD OF HOUSEHOLD</u> 530     |                |
| <b>TOTAL</b>           | <b>72</b>                                   | <u>NON-HEAD OF HOUSEHOLD</u> 834 |                |

[CLICK HERE FOR HEALTH ASSESSMENT DATA](#)